

ESTHER DOCKERY AIA, Leed AP

Brooklyn, NY | m: 917 535 1919 | e: esther@nbo4.com | www.nbo4.com

1. SUMMARY

Foremost a **conscientious, highly motivated problem solver** with a passion for beautiful design, un-compromised function, and technological advance. Approaches projects with a **pragmatic thought process, detail oriented execution and thrives in fast-paced setting.**

Self-starter with extensive experience in *Luxury Ground-up Residential Construction • Multifamily Value-add • Interior Design • NYC Zoning and Building Code & Municipal Agencies • Architectural and Interior Design • Consultant Coordination • Contract Administration • Client Relationships • Writing Proposals • Office Management • Design-Build.*

2. EXPERIENCE

2019 - PRESENT

MORRIS ADJMI ARCHITECTS, NEW YORK, NY

Senior Project Manager, Interiors

Responsibilities:

Concurrently managing several projects in various stages of completion, to design and develop building interiors as well as residential unit layouts and kitchen/ bathroom design. Working in conjunction with directors and architectural PMs to oversee the production of presentations, construction documents and pricing sets. Presenting designs to ownership and coordinating with external consultants to meet a variety of aesthetic, compliance, budget, and scheduling targets. Drafting Proposals and Add-Services, and managing project reporting in Deltek.

N2nd Street, Northern Liberties, Philadelphia

364,000 Gross SF, 23 Story, Mixed-Use Development Project including Retail Spaces, 397 Residential Units and 12,000 SF of Amenities.

100 V Street, BLDG B, Buzzard Point, Washington DC

344,000 Gross SF, 14 Story, Mixed-Use Development Project including Retail Spaces, 375 Residential Units and 6500 SF Lobby, 10,000 SF Fitness Center and Spa, 8,200 SF Amenities.

720 West End Ave NY, NY

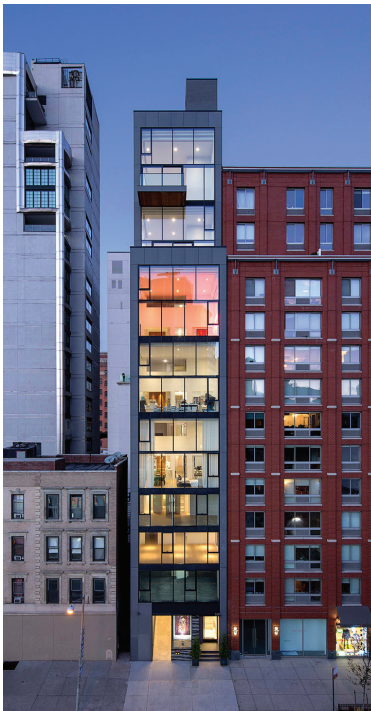
Gut renovation of a 250,000sf 1927 landmark building to feature 117 modern condominiums on 16 levels including a penthouse addition and new construction on additional lot. The Project features over 25,000SF interior amenity spaces, including a fitness and Spa, Squash Court, Childrens and Youth amenities, and a Demo Kitchen and Lounge.

18 West 55th Street NY, NY

150,000 Gross SF Mixed-Use Development Project, comprised of Retail, 97 residential Units and over 12,000SF of interior amenity spaces including, a 3 story Fitness Center with squash court, Business and Social Lounge with Golf Simulator.

809 Atlantic Ave NY, NY

280,000 Gross SF Mixed-Use Development Project comprising of 2 Buildings, Commercial Retail, 285 Rental Apartments, and interior/ exterior amenity Space.



Chelsea Waterside Residences (CWR)

2010 - 2019

NBO4 ARCHITECTURE, NEW YORK, NY

Self-Employed

Responsibilities: *Provided architectural and interior design lead and conducted day-to day responsibilities of office management including payroll, drafting and negotiating contracts. Coordinated with engineers, professional consultants, construction managers and trade contractors to oversee design and production of construction documents. Provided CA Services, coordinated sales and marketing campaigns, punch listing and close-out.*

Chelsea Waterside Residences, NY, NY, Completed 2016

24,000 SF, \$21.5M Condominium development in West Chelsea, NY, 6 duplex residences (1800 SF - 2800 SF) and one 2,000 SF commercial space.

16 East 18th Street, NY, NY, 2019

Gut renovation of a 20,000sf historic landmark building to feature 8 modern apartments including a penthouse duplex.

Multifamily Value-Add, NY, NY, 2017-2019

Alt2 type apartment renovations in multifamily buildings at multiple locations, incl.

10 Rutgers Street

409- 413 East 84th Street

309-311 Washington Ave



CWR - Duplex Kitchen

2007 - 2010

DIEBBOLL ARCHITECTS, NEW YORK, NY

Project Manager



CWR - Duplex Great Room

New South Ocean Development, New Providence, Bahamas

Masterplan for a 385-acre casino and resort development on a pristine shoreline site in New Providence, Bahamas. The development includes two upscale resort hotels, 1/2 - 1 acre residential lots, a yacht club and an 18-hole Greg Norman-designed golf course.

Private Residence, Litchfield, CT

Worked in Design-Build capacity on a 90-acre private farm with a local contractor to construct several residences, landscape elements, and renovation of existing structures.

2006 - 2007

SPaN, NEW YORK, NY

Project Architect



CWR - Master Bath

Townhouses, NY, NY

Gut renovation and extension of multi-family rental properties and conversion to upscale triplex condominiums. Worked closely with the developer to coordinate design, oversaw the production of construction documents for DOB, Landmarks, and Bid Negotiation.

- 41 West 74th Street
- 24 West 11th Street
- 11 Charles Street

2000 - 2006

MICHAEL GRAVES, NEW YORK, NY

Designer



CWR - Penthouse

Private Residence, Hopewell, NJ

SD through CA in conjunction with a project manager. (Published in Architectural Digest, February 2007)

St. Coletta School, Washington DC

St. Mary's Church, Rockledge, FL

DD and CD as part of a project team. Lead efforts on 3D Presentations.

Sagaponac House, Sagaponac NY

Coordinated the presentation and publication documents. (Published in "American Dream, The Houses at Sagaponac" Rizzoli 2003)

Development Projects

Trump International Hotel
Tower and Burj Dubai Condominiums.

3. CREDENTIALS/ SKILLS

EDUCATION

2009 LEED Accredited Professional

2008 New York State **Architecture License**

JUNE 2000 **Masters of Architecture II**
Cornell University, Ithaca, NY

MAY 1998 **Bachelors of Architecture**
University of Miami, Miami, FL,

LANGUAGES

Fluent in: English • German • Hungarian

TEACHING

NYIT Design Fundamentals Studio
2008 Architectural Drawing

NYIT/Tonji Summer in Shanghai
2005 Design and Landscape Studio

CORNELL 1st & 4th Year Design Studio
1998-2000

SOFTWARE

Revit, AutoCAD • Microsoft Office • Adobe Photoshop • Illustrator • InDesign • SketchUp • Bluebeam Revu • QuickBooks • Deltek • Procore • Microsoft Project • PlanGrid